



GEMINI CAPSULE SERIES

GEMINI SERIES CAPSULE GRANULIZERS

- **RECIPE DRIVEN TOTAL ROLL SPEED CONTROL FOR THE ULTIMATE IN GRIND FLEXIBILITY AND CAPABILITIES**
- **INCORPORATES MPE'S PATENTED "VORTEX" NORMALIZER FOR SUPERIOR BULK DENSITY CONTROL**

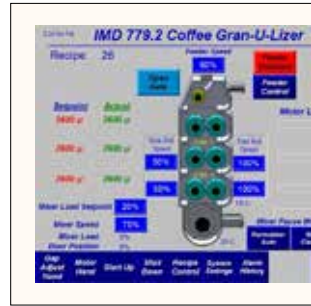
**MODEL SHOWN:
IMD 779.2**



MODERN PROCESS EQUIPMENT CORPORATION

FEATURES

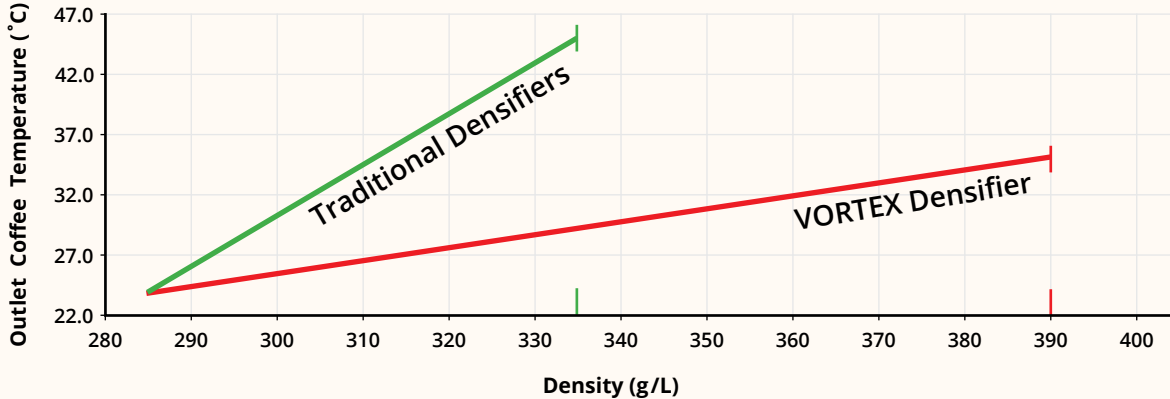
Model	Roll Size (mm)	Sections	Approximate Capacity (kg/hr)					Capsule Grind Range	
			0	400	800	1,200	1,600	2,000	FINE
IMD 669.2	200 x 200	2 - 3		[FINE]					
IMD 779.2	200 x 450	2 - 3		[FINE]		[MEDIUM]			
IMD 889.2	200 x 760	2 - 3			[FINE]		[MEDIUM]		
IMD 999.2	200 x 1020	2 - 3				[FINE]		[MEDIUM]	



THE MPE PATENTED "VORTEX" DENSIFYING SYSTEM

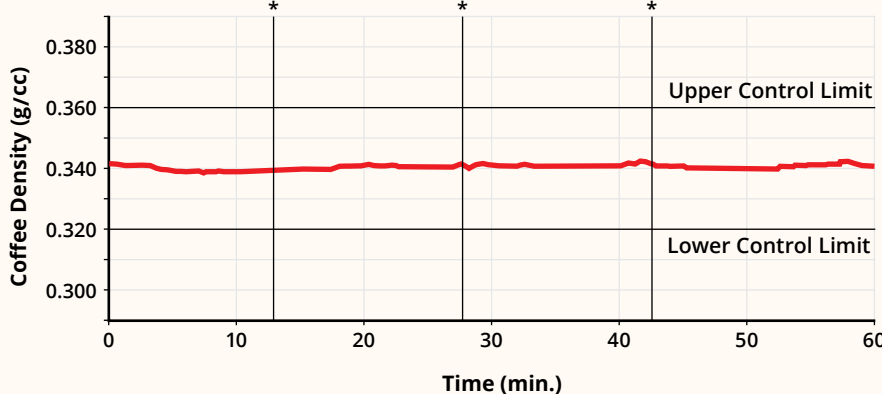
MPE'S PATENTED VORTEX DENSIFIER ACHIEVES THE HIGHEST DENSITY WITH MINIMAL HEAT GENERATION

The MPE Vortex Super Densifier achieves previously unattainable densities through an R&D-derived breakthrough configuration, which optimizes densifier speeds for specific coffees and density levels and allows for precise density control of both high and low density coffees, in one machine.



ABSOLUTE DENSITY CONTROL

100% density control and integrity is critical in capsule production, and is achieved with the MPE Patented "VORTEX" Densifying System



Zero waste, otherwise caused by intermittent and frequent starting and stopping of production (see chart *)



THE MPE GEMINI SERIES GRINDERS UTILIZE THE SAME FOOTPRINT AS A STANDARD GRINDER

AUTOMATED RECIPE-DRIVEN CONTROL SYSTEM

with precision gap and motor control for each grinding section and roll



INDEPENDENT MOTOR DRIVES (IMD) FOR EACH GRINDING ROLL

Each grinding roll is driven by its own high-efficiency Independent Drive, which allows users to electronically select each roll speed, from 1:1 to 4:1 ratio. This added flexibility allows for a wide range of grind profile capabilities and the ability to "engineer the grind" for each capsule style and coffee type.



HANDY PLACEHOLDER FOR DOOR FASTENERS



COFFEE ACCUMULATION IS MINIMIZED WITH MPE'S "BLACK ICE" DEFLECTORS

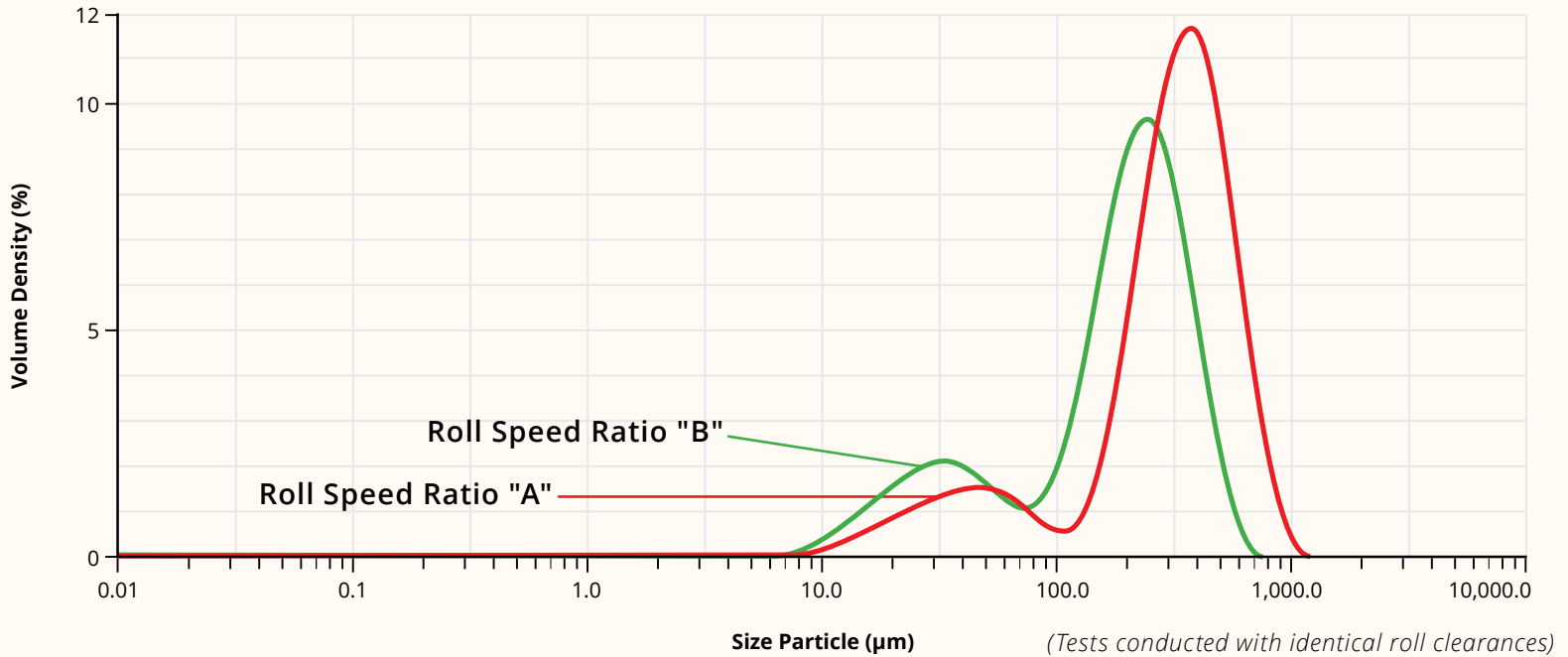
GEMINI Series grinders utilize proprietary nanotechnology to minimize friction on the vibrating deflectors

MPE'S PROPRIETARY INSPECTION PORTS

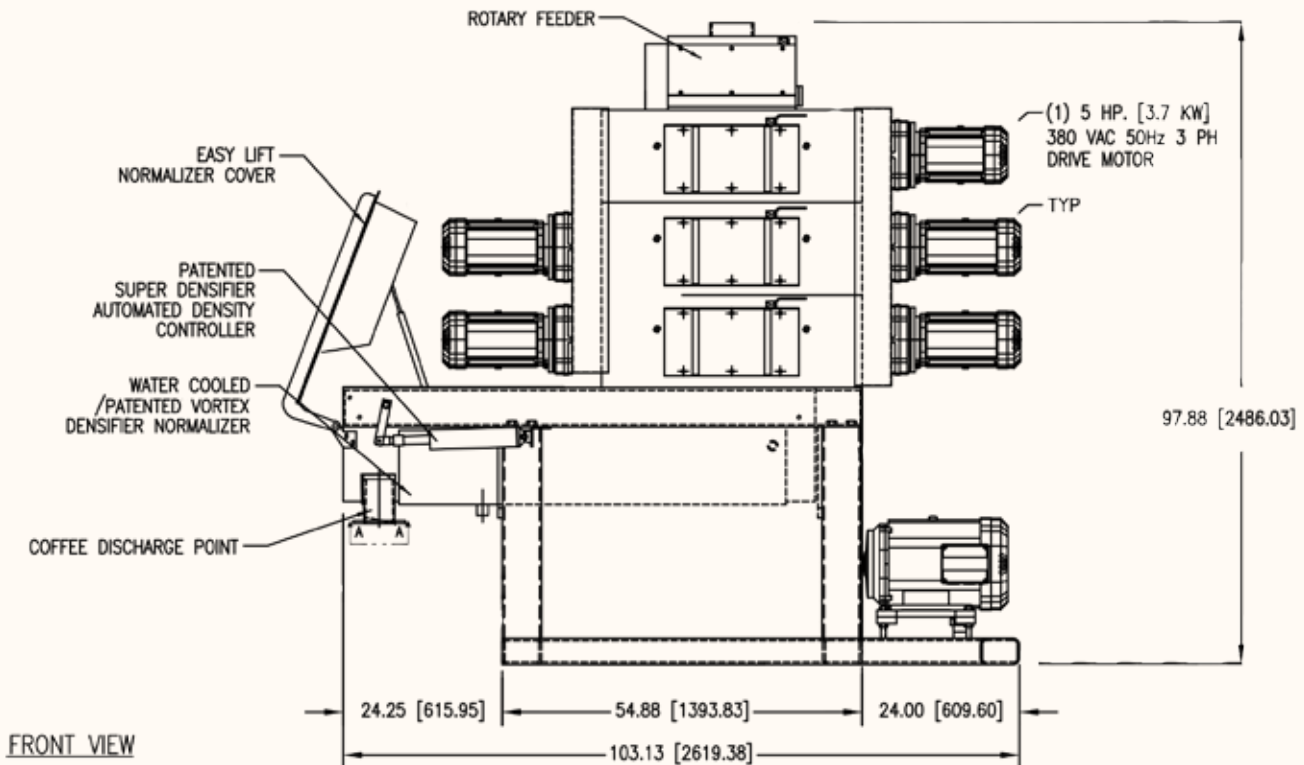
allow for the analysis of coffee particles under the rolls while the grinder is operating

GEMINI SERIES LASER DIFFRACTION RESULTS

ONE EXAMPLE OF PARTICLE DISTRIBUTION CAPABILITIES
UTILIZING ONLY VARIABLE ROLL SPEED CONTROL



SPECIFICATIONS: IMD 779.2 (MODEL SHOWN)



MODERN PROCESS EQUIPMENT CORPORATION

w: www.mpecoffee.com e: solution@mpechicago.com t: 1.773.254.3929

CHICAGO, IL USA