



---

**Model GPX.WCI**  
**Precision Disc Style Coffee Grinder with Integrated Water Cooling System**



**Modern Process Equipment, Inc.**  
**Chicago, Illinois**



---

## OVERVIEW

The Model GPX Disc Style Coffee Grinder utilizes precision cut "diamond hard" grinding plates to produce up to 400 lbs per hour of a full range of coffee grinds. The grinder utilizes a 3 HP (1800 RPM) motor to drive a rotor, which incorporates an auger feeder and a rotating grinding disc. The rotor also incorporates turbo vanes to maximize throughput and minimize product accumulation within the unit.

The gap between the rotating grinding disc and a stationary grinding disc, which is mounted directly opposite on the grinder housing, determines the type of coffee grind produced. The machine's grind adjustment knob utilizes a screw assembly and thrust bearing to vary the position of the rotor on the motor shaft and, consequently, adjust the gap between the grinding discs. This disc gap variance provides the capability of "dialing in" any one of a full range of coffee grinds, from drip to espresso.

On "American" style coffees, it may be necessary to utilize the dechaffer on your GPX grinder. By utilizing the weight on the dechaffing arm, back pressure is exerted on the coffee being expelled from the grinder, thereby breaking up the "chaff" (broken coffee skin) which is released when the bean is ground. By moving the weight outward on the dechaffing arm, the back pressure and the resulting level of dechaffing is increased. When producing very fine coffees (melitta, espresso, turkish), the dechaffing level should be minimized or, in some cases, eliminated by removing the weight.



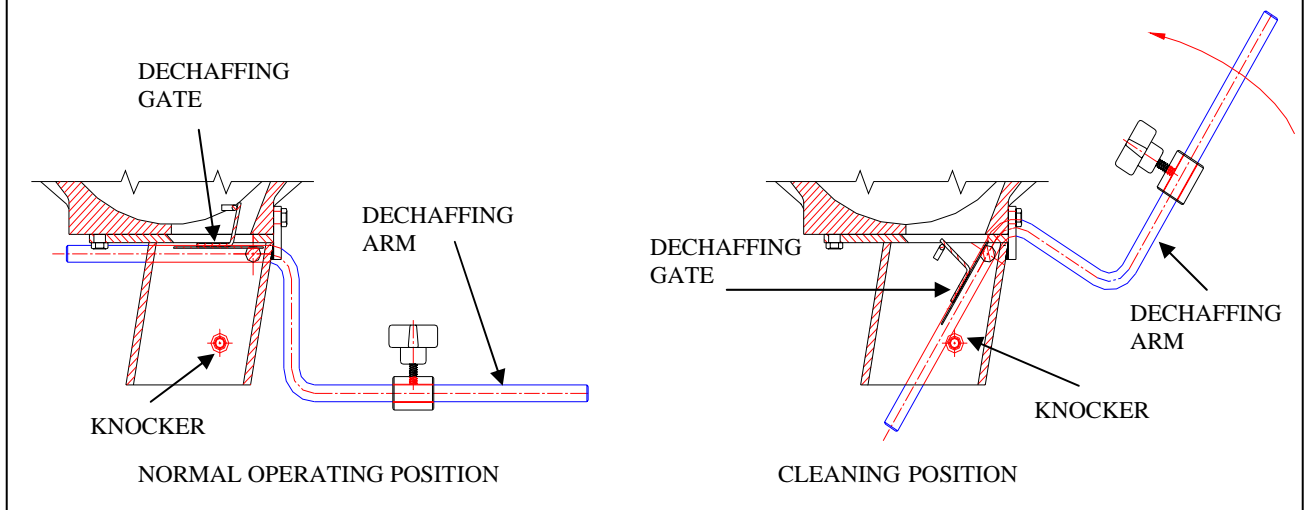
## OPERATION AND MAINTENANCE

Because of its uncomplicated design, the GPX grinder is relatively simple to operate. Prior to starting the grinder, ensure that the coffee bean control gate is fully closed. To grind coffee, simply start the grinder, fill the hopper with the desired amount of beans, set the dechaffer arm weight, "dial in" the desired grind on the grind adjustment knob, and open the bean control gate. As a starting point, the dechaffer arm weight should be set at 1/2 the arm distance for medium to coarse grinds, and at the bottom of the arm (fully toward the machine) for finer grinds. When the grinding run is complete, close the control gate, lift the dechaffer arm to remove any excess coffee, and shut down the grinder.

### NOTE

**TO REMOVE ANY COFFEE BUILDUP ABOVE DECHAFFING GATE, SWING THE DECHAFFING ARM UPWARD UNTIL IT IMPACTS ON THE "KNOCKER", AS SHOWN IN THE DRAWING BELOW.**

**DO NOT PUSH OR FORCE HANDLE DOWN**



To change the grind range on the grind adjustment knob, loosen the knob set screws, rotate the adjusting screw in the middle of the knob (Clockwise=Finer) to the desired point, and retighten the knob set screws.

### **CAUTION!**

**LOCK OUT OR DISCONNECT MOTOR PRIOR TO ATTEMPTING WORK,  
REPAIR OR REMOVAL OF COVER FROM THIS UNIT.**



---

### **WATER COOLING**

The GPX.WCI has an integrated water cooling loop that flushes water through the aluminum grinder housing to remove heat from the grinding process.

The closed loop system includes a pump, heat exchanger, fan, and mode selector switch.

### **OPERATING MODES**

- |             |  |
|-------------|--|
| OFF -       | Pump is OFF  |
| ON -        | Pump is ON; water will flow through the grinder head.  |
| AUTOMATIC - | The water cooling pump starts automatically when the grinder is started and stops automatically one minute after the grinder is stopped. |

### **NOTE**

**WATER COOLING SHOULD REMAIN IN AUTOMATIC MODE.**

Model GPX.WCI Precision Disc Style Coffee Grinder  
with Integrated Water Cooling System



On occasion, the grinder will require disassembly for cleaning and/or grinding disc replacement. To disassemble, remove the front cover after first removing the (3) front cover screw knobs. After the front cover has been removed, the rotor can be pulled out either by hand or by utilizing "ejector screws" on the rotor insert (part #4 on drawing SG-1206-B) which, when screwed in, act against the motor shaft to force the rotor out. Refer to drawing SG-1206-B for further details on the internal construction of the grinder.

**NOTE**

**PRIOT TO GRINDING, CONFIRM THAT THE DRIVE MOTOR IS TURNING COUNTER CLOCKWISE AS VIEWED FROM THE FAN END OF THE MOTOR. A MOTOR ROTATION STICKER IS LOCATED ON THE FAN GUARD. THE GRINDING BURR TURNS CLOCKWISE AS VIEWED FROM THE GRIND ADJUSTMENT KNOB.**



**NOTE**

**NOT ALL DRAWINGS APPLICABLE TO EACH GPX GRINDER. THE  
APPROPRIATE ELECTRICAL DRAWING SHOULD BE USED BASED ON  
THE ACTUAL GRINDER SPECIFICATIONS.**

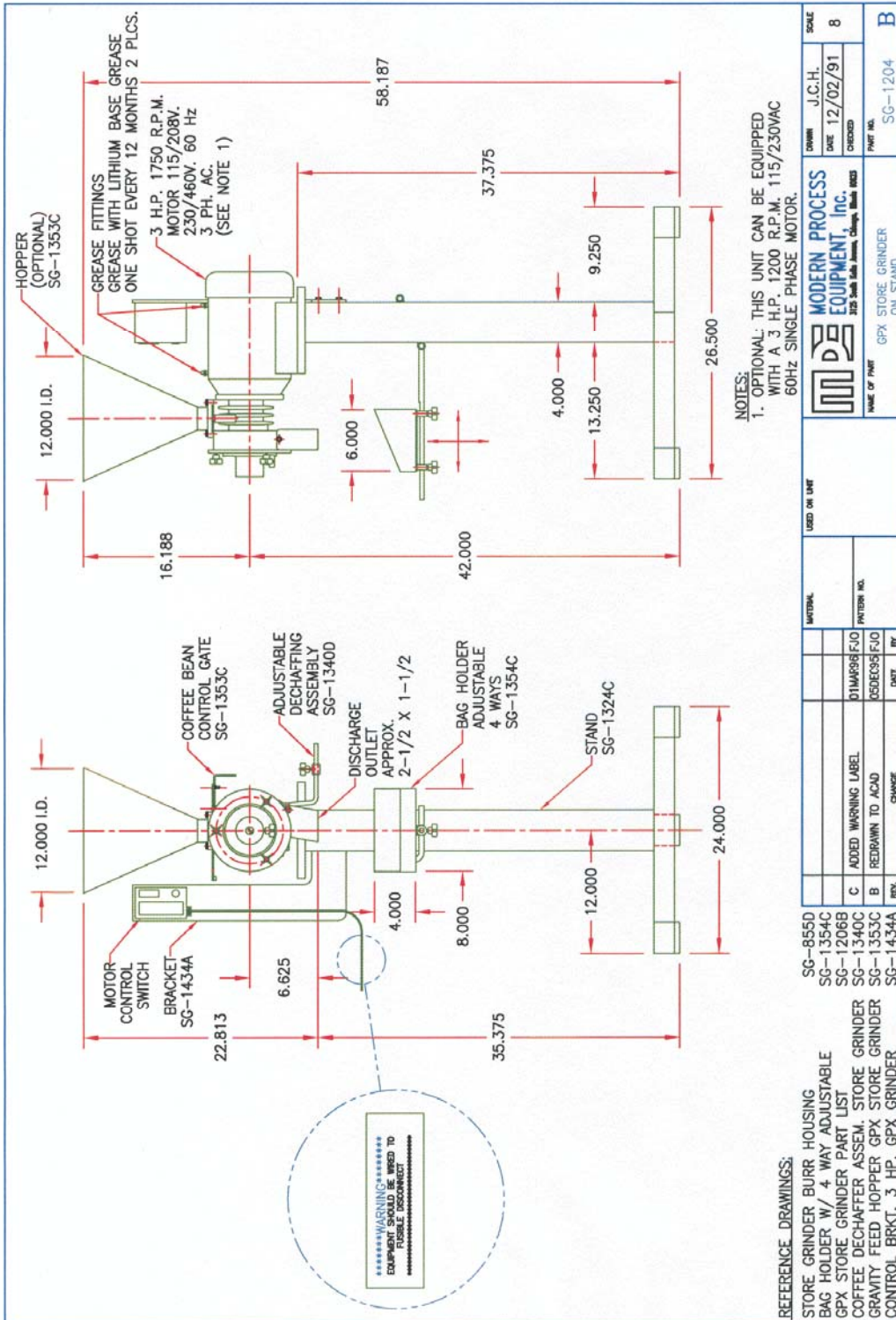
**Drawings**

GPX Store Grinder on Stand	SG-1204B
GPX-B Store Grinder Bench Model	SG-1205B
Model GPX Disc Style Grinder Parts List	SG-1206B
Electrical Schematic 230V AC GPX.WC 3PH	EL-7357-1
Electrical Schematic 230V AC GPX.WC Single PH	EL-7357-4
Model GPX Disc Style Coffee Grinder With Parts List	SG-2520C
GPX Store Grinder on Stand with WC Box Location	SG-7353

Model GPX.WCI Precision Disc Style Coffee Grinder  
with Integrated Water Cooling System

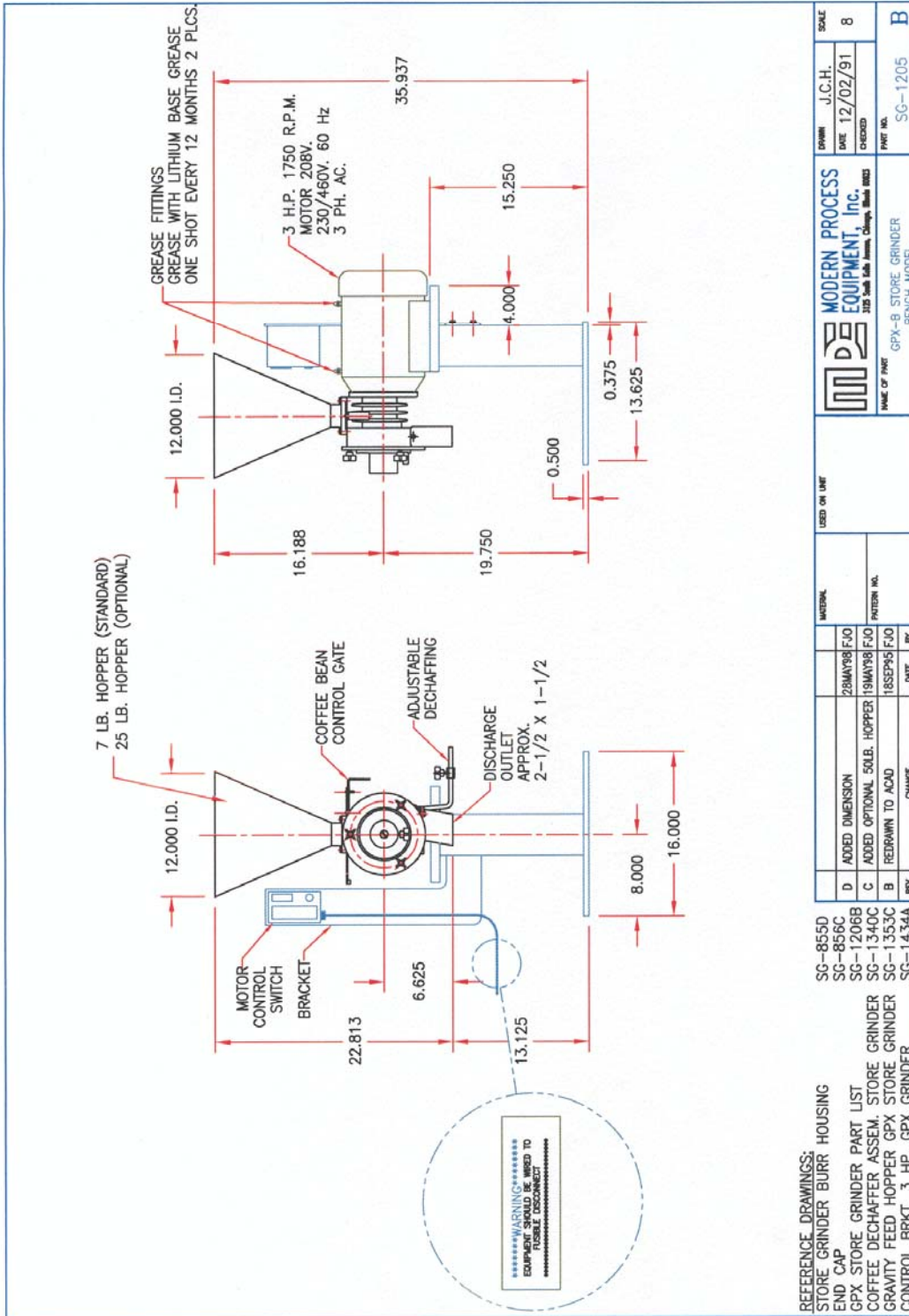


# Model GPX.WCI Precision Disc Style Coffee Grinder with Integrated Water Cooling System





# Model GPX.WCI Precision Disc Style Coffee Grinder with Integrated Water Cooling System



# Model GPX.WCI Precision Disc Style Coffee Grinder with Integrated Water Cooling System



ITEM	QTY.	PART #	DESCRIPTION
1	1	GPX-1	BURR HOUSING (56C FRAME)
1A	1	GPX-1A	BURR HOUSING (184C FRAME)
2	1	GPX-2	END CAP
3	1	GPX-3	ROTOR
4	1	GPX-4	ROTOR INSERT
4A	4	GPX-4A	SOCKET HEAD SCREW
5	1	GPX-5	SPRING
6	1	GPX-6	ADJUSTING SCREW
7	2	GPX-7	GRINDING BURRS
8	1	GPX-8	MOTOR (SEE CHART BELOW)
9	1	GPX-9	BALL BRG.
10	1	GPX-10	BRONZE ROTOR BUSHING
11	1	GPX-11	1" I.D. X 1-1/8" O.D. X 2-3/4" THRUST WASHER
12	1	GPX-12	1" X 2" X 1/8" THK. DETENT PLATE
13	1	GPX-13	SPRING PLUNGER
14	1	GPX-14	PEDESTAL TYPE SUPPORT
15	1	GPX-15	HOPPER-GRAVITY FEED
16	1	GPX-16	METERING GATE
17	1	GPX-17	BAG HOLDER ASSEM. ADJUST.
18	1	GPX-18	DECHAFFER UNIT
19	1	GPX-19	BURR WEAR SHIM
20	4	GPX-20	4 PRONG PLASTIC KNOBS
21	1	GPX-21	4 PRONG PLASTIC KNOBS
22	1	GPX-22	DIAL INDICATOR KNOB
23	4	GPX-23	1/4-20 X 1-1/2 S.S. STUD
24	1	GPX-24	ALLIGATOR WIRE CLIP (GROUND)
25	4	GPX-25	1/4-20 X 7/16 PAN HEAD

MOTORS			
ITEM	QTY.	HP.	R.P.M.
			FRAME
8	3	1725	184C 230/460
	3	1725	184TC 115/208-230
			56C SINGLE

REFERENCE DRAWINGS:  
ELEVATION VIEW

SG-1204B

REV.	CHANGE	DATE	BY	REV.	CHANGE	DATE	BY
F	ADDED ITEM NO. 24 & 25	23SEP02	FJO				
C	CHD 2-1/2 TO 2-3/4 PER PHENUN88	02MAR00	FJO				
D	ADDED ITEM 23 PER P.E.	02MAR00	FJO				
E	ADDED ITEM 4A PER H.C.	12APR02	FJO				

USED BY UNIT	DATE	BY

 <b>MODERN PROCESS EQUIPMENT, Inc.</b> <small>132 South Mills Avenue, Chicago, Illinois 60606</small>	DRAWN: J.C.H. DATE: 07/06/92 CHECKED:
NAME OF PART: MODEL GPX DISC STYLE GRINDER PARTS LIST	PART NO.: SG-1206
SCALE: 1=1	

# Model GPX.WCI Precision Disc Style Coffee Grinder with Integrated Water Cooling System



MUST BE CONNECTED TO FUSEABLE DISCONNECT

3Ø 220V, 3ØV OR 440V

20' LONG CORD

RED WHITE BLACK GREEN

SWITCH

FUSE

SEE TABLE

1 2 3 4 5 6 7 8 9 10 11 12 13 14 15 16 17 18 19 20 21 22 23 24 25 26 27 28 29 30 31 32 33 34 35 36 37 38 39 40 41 42 43 44 45 46 47 48 49 50 51 52 53 54 55 56 57 58 59 60 61 62 63 64 65 66 67 68 69 70 71 72 73 74 75 76 77 78 79 80 81 82 83 84 85 86 87 88 89 90 91 92 93 94 95 96 97 98 99 100

HP.	VOLTS	AMPS	STARTER NO.	SO CORD	
				WIRE	LENGTH
5	220	15.2	01-33511-36	12-4	20'-0"
5	380	8-10	01-325-10009	12-4	
5	440	7.6	01-33509-42	14-4	
10	220	28.0	01-33513-36	12-4	
10	440	14.0	01-33511-42	14-4	

5.000

7.000

BOX DEEP 5-5/8

STOP

START

3Ø 220V OR 440V

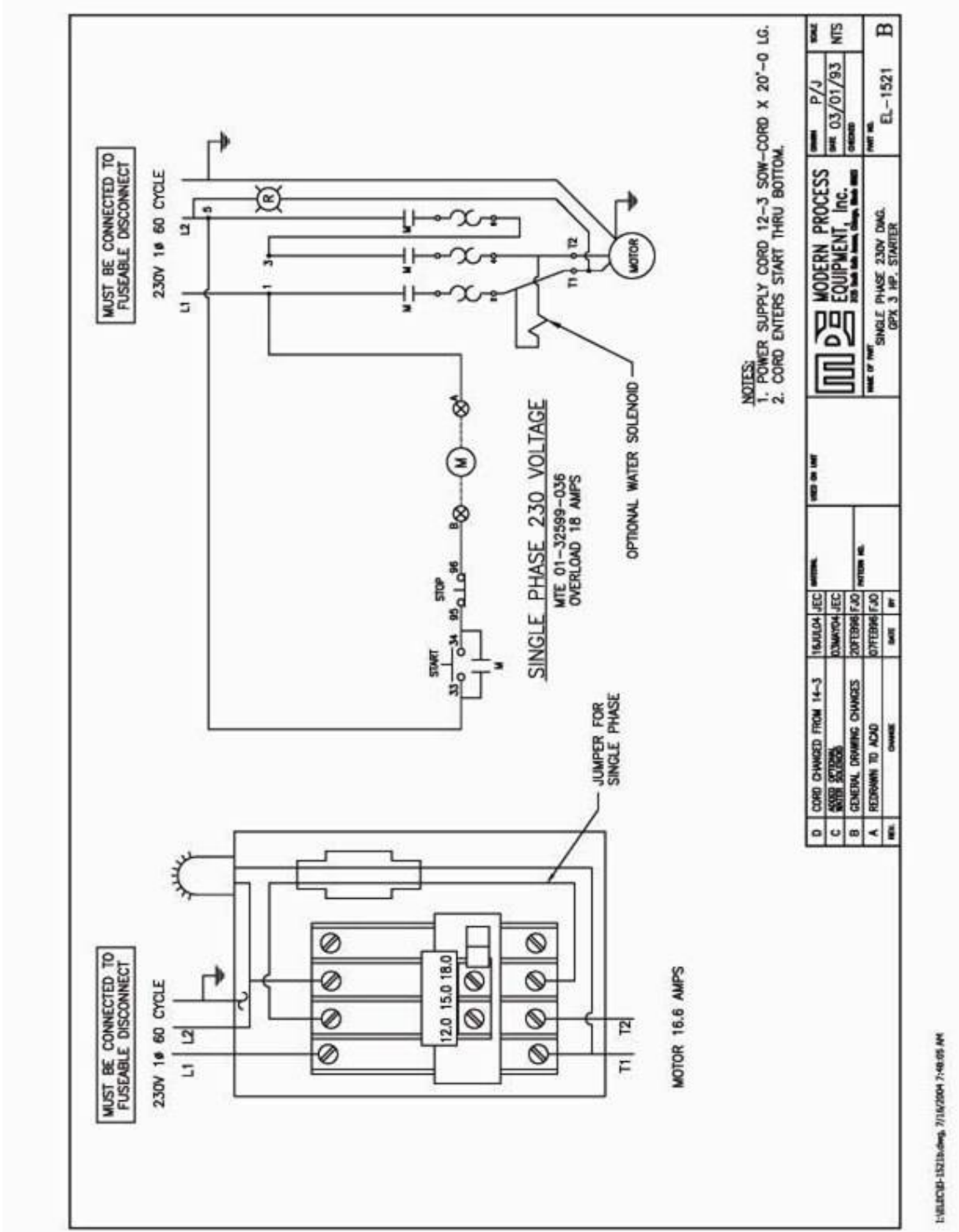
1 2 3 4 5 6 7 8 9 10 11 12 13 14 15 16 17 18 19 20 21 22 23 24 25 26 27 28 29 30 31 32 33 34 35 36 37 38 39 40 41 42 43 44 45 46 47 48 49 50 51 52 53 54 55 56 57 58 59 60 61 62 63 64 65 66 67 68 69 70 71 72 73 74 75 76 77 78 79 80 81 82 83 84 85 86 87 88 89 90 91 92 93 94 95 96 97 98 99 100

MODERN PROCESS EQUIPMENT, INC.

7116/2004-7-31-23 AM

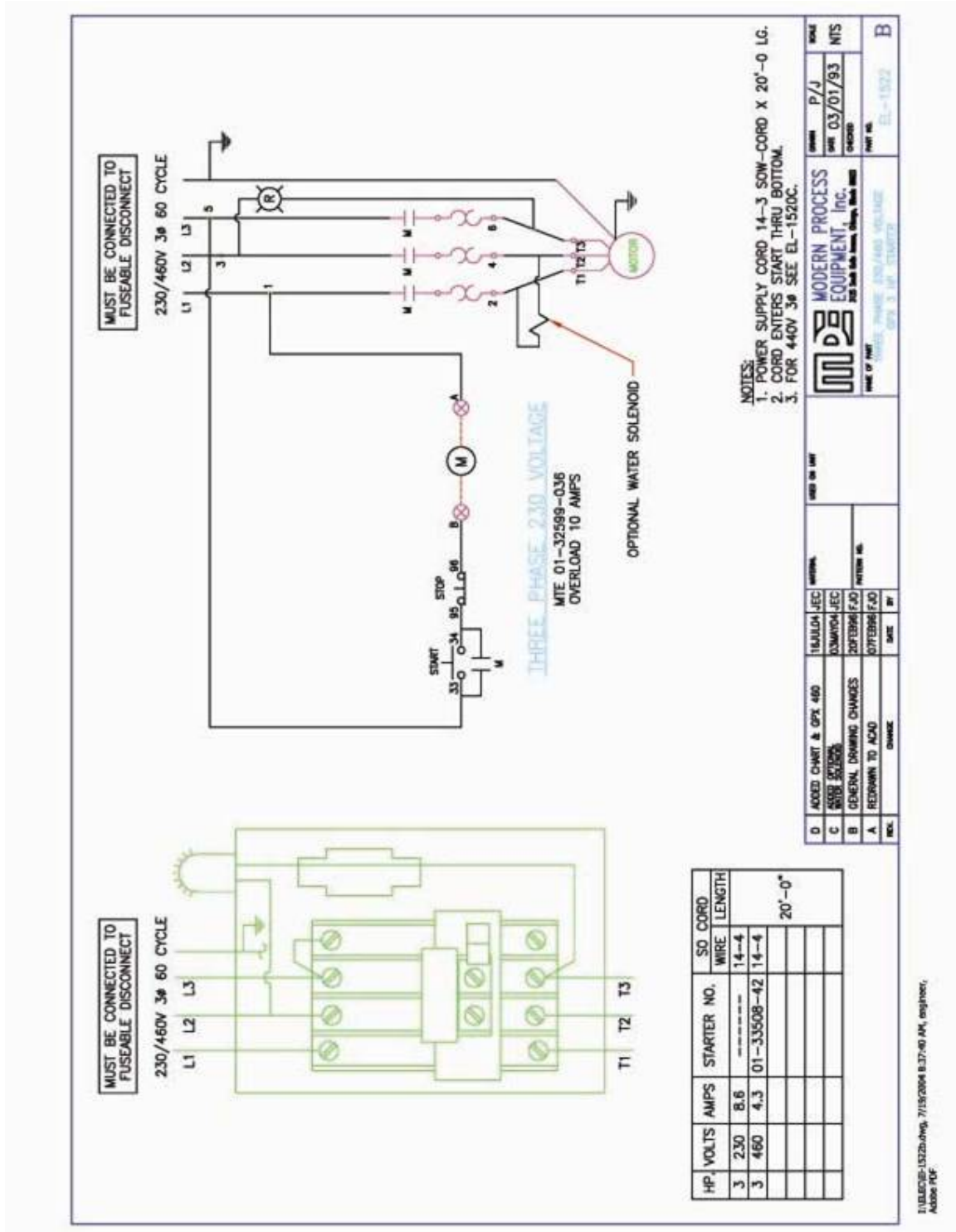
EL-1530 C

# Model GPX.WCI Precision Disc Style Coffee Grinder with Integrated Water Cooling System





# Model GPX.WCI Precision Disc Style Coffee Grinder with Integrated Water Cooling System



# Model GPX.WCI Precision Disc Style Coffee Grinder with Integrated Water Cooling System



ITEM QTY.	PART #	DESCRIPTION	ITEM QTY.	PART #	DESCRIPTION
35	1	GPX-35	1	GPX-1	BURR HOUSING (56C FRAME)
			1A	GPX-1A	BURR HOUSING (184C FRAME)
			2	GPX-2	END CAP
			3	GPX-3	ROTOR
			4	GPX-4	ROTOR INSERT
			5	GPX-5	SPRING
			6	GPX-6	ADJUSTING SCREW
			7	GPX-7	GRINDING BURRS
			8	GPX-8	MOTOR (SEE CHART TO THE LEFT)
			9	GPX-9	BALL BRG. SKF 6203 2RS
			10	GPX-10	SINTERED BRG.
			11	GPX-11	THRUST WASHER
			12	GPX-12	1" X 2" X 1/8" THK.
			13	GPX-13	DETENT PLATE
			14	GPX-14	SPRING PLUNGER SSS-59-N
			15	GPX-15	PEDESTAL TYPE SUPPORT
			16	GPX-16	HOPPER-GRAVITY FEED
			17	GPX-17	METERING GATE
			18	GPX-18	BAG HOLDER ASSEM. ADJUST.
			19	GPX-19	DECHAFFER UNIT (SPOUT NOT INCL.)
			20	GPX-20	BURR WEAR SHIM
			21	GPX-21	4 PRONG PLASTIC KNOBS
			22	GPX-22	4 PRONG PLASTIC KNOBS
			23	GPX-23	DIAL INDICATOR KNOB
			24	GPX-24	1/4" - 20 X 1/2" HEX BOLT
			25	GPX-25	PLASTIC KNOB 1/4-20 STUD
			26	GPX-26	DISCHARGE SPOUT
			27	GPX-27	Ø3/8 C.R.R. CTWT ROD
			28	GPX-28	Ø3/4 X 13/32 I.D. X 1 CTWT GATE
			29	GPX-29	RETAINING RING
			30	GPX-30	FLANGED BUSHING
			31	GPX-31	6-32 X 1/4" PHILLIPS HEAD
			32	GPX-32	GATE KNOCKER
			33	GPX-33	PIVOT AXLE
			34	GPX-34	8-32 X 1/4" SLT. HEAD

ITEM QTY.	PART #	DESCRIPTION
35	1	GPX-35
		ALLIGATOR WIRE CLIP (GROUND)
		MOTORS
		HP. I.P.M. FRAME VOLTS PHASE
		3 1725 184C 230/460 3
		3 1725 184TC 115/208-230 SINGLE
		56C

REV.	CHANGE	DATE	BY	MATERIAL	USED OR UNF
C	ADDED ITEM 35 PER P.E.	26SEP02/FJO			
B	UPDATED ITEM 18 PER B.T.	17AUG02/FJO			
A	ADDED BUBBLE FOR PART No. 18	18DEC97/FJO			

NAME OF PART	MODEL	DATE	BY	USED OR UNF
MODEL GPX DISC STYLE COFFEE GRINDER WITH PARTS LIST				

DRIVEN	FJO	SCALE
DATE 12/01/95		2

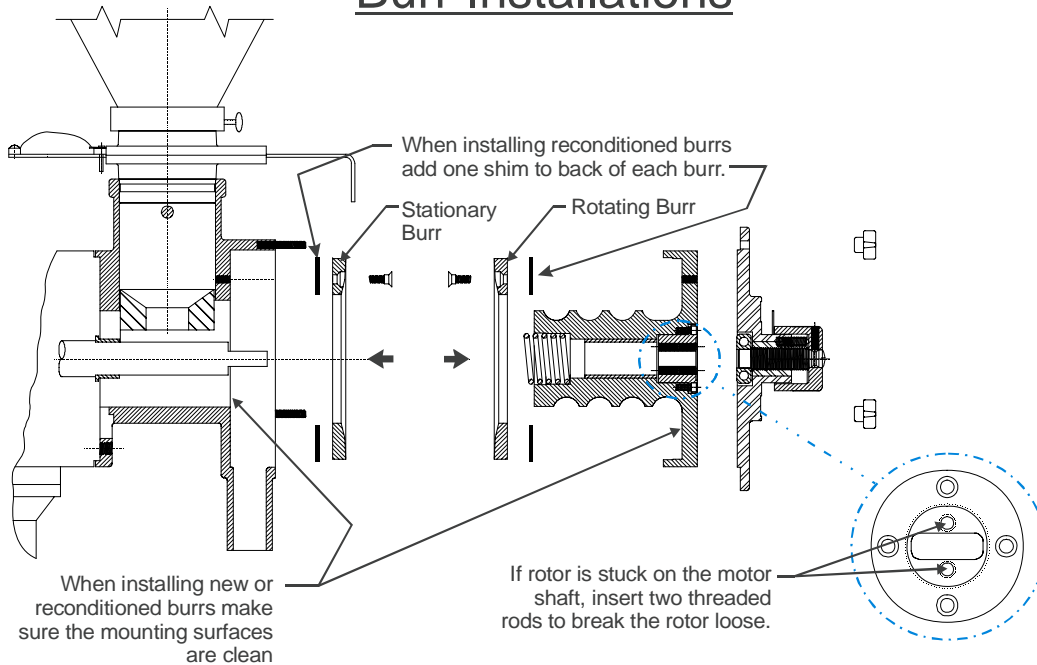
CREATED	PART NO.
	SG-2520

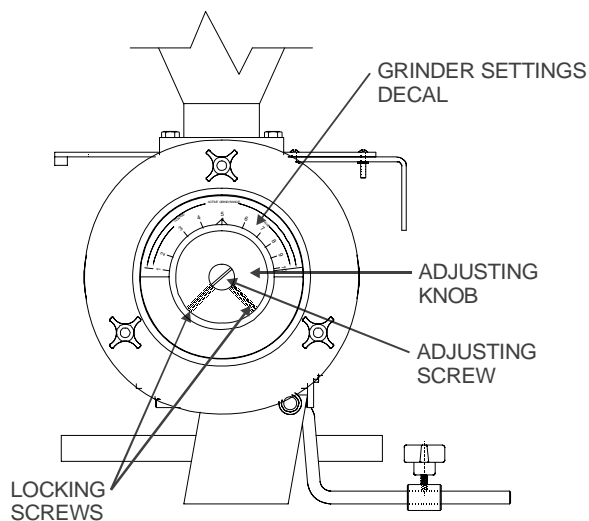
**MODERN PROCESS EQUIPMENT, Inc.**  
 325 S. 10th Street, Chicago, Illinois 60607



## Burr Installations



## Zero Adjust Procedure



1. After fully assembling grinder, turn grinder on.
2. Loosen locking screws
3. Rotate the knob to grind setting No. 10.
4. With a screwdriver turn adjusting screw clockwise until burrs touch lightly.
5. Tighten locking screws.
6. For GPX grinders turn knob counterclockwise to grind setting No. 8, For GPC grinders turn knob counterclockwise to grind setting No. 9.
7. With a screw driver hold the position of the adjusting screw, then loosen the locking screws.
8. While still holding the position of the adjusting screw, turn the knob to grind setting No. 10.
9. Tighten locking screw.
10. The grinder is now adjusted to the original factory settings.