

THE MPE  
**CHAIN-VEY®**  
 TUBULAR DRAG CONVEYOR

CONVEYS PRODUCTS GENTLY,  
 EFFICIENTLY, HORIZONTALLY AND  
 VERTICALLY IN A DUST-TIGHT  
 ENVIRONMENT WITHOUT PRODUCT  
 DEGRADATION OR DECLASSIFICATION

**CHAIN-VEY® BENEFITS:**

- MINIMIZE PRODUCT BREAKAGE, DEGRADATION AND DECLASSIFICATION (SEGREGATION)
- FLEXIBLE: COMBINES HORIZONTAL AND VERTICAL TRANSPORT IN ONE SYSTEM
- CIP (CLEAN-IN-PLACE) CAPABILITIES
- ENERGY EFFICIENT

SUPERIOR CONVEYING



**CHAIN-VEY® VS. OTHER CONVEYING METHODS**

CONVEYOR DESIGN FEATURES	MAINTAINS PARTICLE DISTRIBUTION (INTEGRITY)	AIR / DUST TIGHT	CLEAN-IN-PLACE (CIP)	ENERGY EFFICIENT	EXTENDED LENGTH CAPABILITY	LOW / NO MAINTENANCE	MULTIPLE INLETS / DISCHARGES
CHAIN-VEY®	✓	✓	✓	✓	✓	✓	✓
AUGER/ELEVATOR						✓	
BUCKET ELEVATOR	✓			✓			✓
DENSE PNEUMATIC		✓			✓		✓
DILUTE PNEUMATIC		✓			✓		✓

**STANDARD AND CIP  
 TYPICAL CHAIN-VEY® APPLICATIONS**

**FOOD**

Barley	Cocoa	Cookie	Fruit: Dried	Jelly Beans	Oats: Steel Cut	Soluble Corn Fiber	Vitamins: Powdered
Bread Crumbs	Coffee: Green	Crumbs	Fruit: Frozen	Krill Oil	Pepper	Soup Mix	Wheat
Brown Sugar	Coffee: Ground	Crackers	Hard Candy	Malt/Meal	Rice: Dried	Spices	
Cereal	Coffee: Roasted	Flour: Corn	Hops	Oats: Rolled	Rice: Puffed	Tea	
Cheese Powders	Coffee: Whole Bean	Flour: Wheat	Ingredients	Oats: Instant	Snack Foods	Vegetables: Frozen	

**BEANS / NUTS / SEEDS**

Almonds	Grains / Seeds	Lentils	Oil Seeds	Peanuts: Roasted	Walnuts
Black Beans	Great Northern Beans	Lima Beans	Pecans	Pinto Beans	
Cocoa Beans	Kidney Beans	Navy Beans	Peanuts: Blanched	Soy Beans	

**PET FOOD**

Chicken Meal	Fish Food	Raw Ingredients
Dry Food	Fish Meal	Treats
Fines / Add backs	Horse Feed	Whole Kibble

**CHEMICAL**

Biomass (Torrefied)	Coke	Fertilizer	Sodium Bicarbonate
Calcium Carbonate	Detergent	Flake Resin	
Calcium Hydrate	Feed Phosphate	Pesticide	

**MINERAL**

Activated Carbon	Ash	Clay	Coal: Dried	Sintered Dust
Activated Coal Ash	Bentonite Clay	Coal	Graphite	Talcum Powder
Alumina Hydrate	Carbonate	Coal: Brown	Limestone	

**OTHER**

Latex	Pigments	Shredded Waste	Wood Chips
Litter	Plastics	Tobacco	
Pellets	Sawdust	Wax Flakes	

Don't see your specific application?

Contact a MPE Sales Engineer in order to set up product feasibility testing at our Full Scale Chain-Vey Lab located in Chicago, IL U.S.A.

**CHAIN-VEY®**

A DIVISION OF MODERN PROCESS EQUIPMENT CORPORATION

3125 SOUTH KOLIN AVENUE • CHICAGO, ILLINOIS 60623 U.S.A.  
 WWW.CHAINVEY.COM • E: INQUIRY@CHAINVEY.COM • P: 1.773.254.3929 • F: 1.773.254.3935

MODERN PROCESS EQUIPMENT CORPORATION



**THE BETTER  
 WAY TO CONVEY**



**WWW.CHAINVEY.COM**

1.773.254.3929 • INQUIRY@CHAINVEY.COM



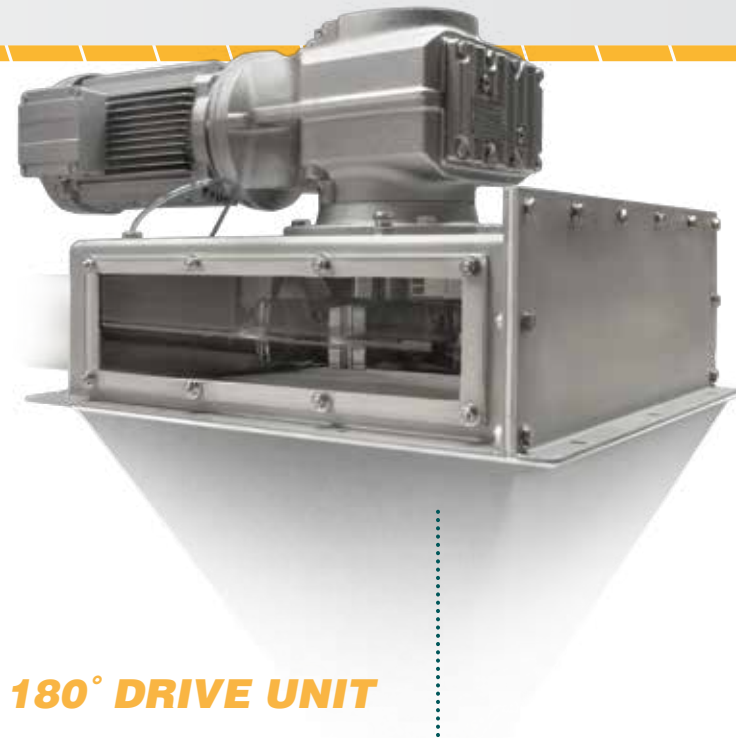
**THE MOST GENTLE & EFFICIENT**  
TRANSPORT AVAILABLE FOR VIRTUALLY ANY PRODUCT

**CHAIN-VEY CONFIGURATION WITH MULTIPLE INLETS AND DISCHARGE(S) UP TO 250 FT. AWAY**

**ROTARY DISCHARGE VALVE**  
Pneumatically actuated rotary valve allows for unobstructed product discharge



**180° DRIVE UNIT**



**DISC MATERIALS AND PERFORMANCE**

- FDA approved UHMW discs
- Disc design options include direct over-molded onto stainless steel chain or split design with sanitary stainless steel compression rivet fastener
- Chain available in 316 stainless steel or ultra high strength hardened alloy steel
- All chain has ultimate tensile strength of over 16,000 lbs

**CHOOSE YOUR CONVEYING CAPACITY**

**6 IN. 5 IN. 4 IN. 3 IN.**  
1,400 ft<sup>3</sup>/hr (40 m<sup>3</sup>/hr) 1,000 ft<sup>3</sup>/hr (28 m<sup>3</sup>/hr) 650 ft<sup>3</sup>/hr (18 m<sup>3</sup>/hr) 280 ft<sup>3</sup>/hr (8 m<sup>3</sup>/hr)



**RELIABLE SUPERMAX**

**CONNECTOR LINK SYSTEM**

**TOTAL SYSTEM SOLUTIONS**



**AVAILABLE SYSTEM DESIGNS**

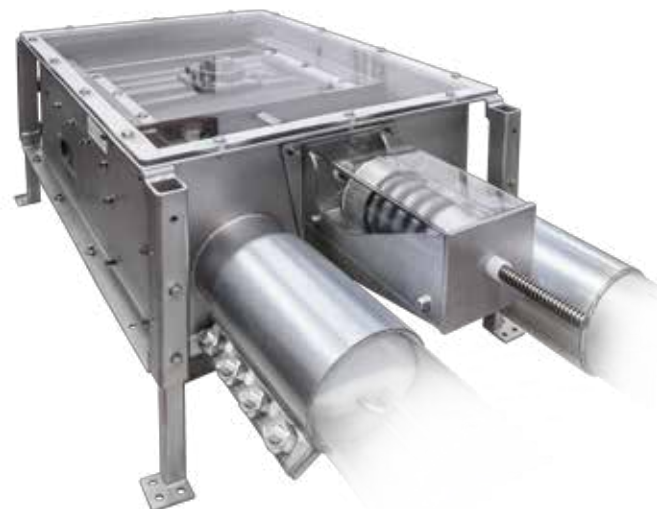
CHAIN-VEY® DESIGN TYPE	CLEANING CAPABILITIES	DESIGN FEATURES & OPTIONS	AUXILIARY CLEANING EQUIPMENT & SERVICES
<b>STANDARD</b>	Ideal for Dry Products and Ingredients <1% Crossover Between Batches and/or Product Changeovers Eliminate Product Accumulation on Chain/Puck and Internal Components	Polyurethane Wiper Disk Magnathane Wiper Disk Adjustable Air Knives	Brush Box (Dynamic) Brush Box (Static)
<b>HYBRID CLEAN-IN-PLACE</b>	Facilitates the introduction of Water, Foam, and/or Dry Ice into System Permits Change in Flavor Profiles and Product Colors Changeover Between Product Varieties (i.e. Gluten/Non-Gluten) Eliminate Allergens	Modifications to Turnaround, Drive and Discharge Valves to include Spray Nozzles, Drying Port, and Drain Pan Cleanout Access Doors on Transitions, Turnaround and Drive Unit Drop-in Sponge Link Flanged Pipe Connections Full CIP Turnaround & Drive Unit Design	Standalone Foaming Unit and Dry Ice Blasting Unit Integration of Existing Plant CIP System/Practices Manifold Design to Facilitate Quick Connection Points Automated Drain and Drying Valves for Automated Cleaning Cycles Fully Automated Mobile Cleaning Cart Facilitating Four Stage CIP Cycle: Rinse, Wash, Sanitize, Dry
<b>CLEAN-IN-PLACE</b>	Facilitates the Introduction of Water, Foam, Detergent, and Cleaning Solutions Permits Change in Strong Flavor Profiles and Product Colors Changeover Between Product Varieties (i.e. Gluten/Non-Gluten) Passes All Swab Tests: ATP, Aerobic Plate Count, Coliform, Bi-Luminous	Flanged Pipe Connections Allowing System to be Flooded Full CIP Turnaround & Drive Unit Design Including Elimination of Harborage Points, Spray Nozzles, Drying Ports, and Drains Nitric Acid Passivation Pipe and Component Polish	Integration of Existing Customer CIP System/Practices Manifold Design to Facilitate Quick Connection Points Automated Drain and Drying Valves for Automated Cleaning Cycles Fully Automated Mobile Cleaning Cart Facilitating Four Stage CIP Cycle: Rinse, Wash, Sanitize, Dry



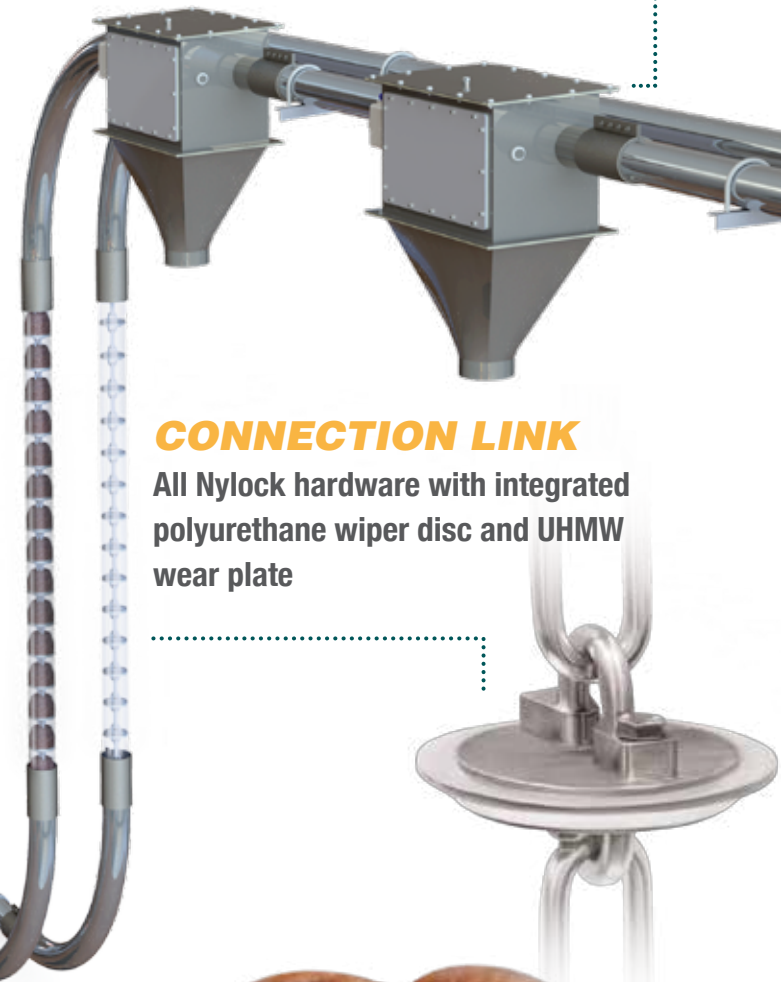
**COMPARE OUR SYSTEM →**

**PRODUCT INLET**  
With optional flow baffle

**180° TURNAROUND**



**CONNECTION LINK**  
All Nylock hardware with integrated polyurethane wiper disc and UHMW wear plate



**LET US HELP**

Ask about our free product testing and system design capabilities: **1.773.254.3929 • INQUIRY@CHAINVEY.COM**