

1000 UPD

# MODEL **1000 UPD** SOLUBLE COFFEE GRANULIZER

## **ULTRA UNIFORM PARTICLE DISTRIBUTION (UPD) TECHNOLOGY FOR SOLUBLE/EXTRACT COFFEE**



Model 1000 UPD Soluble Coffee Granulizer

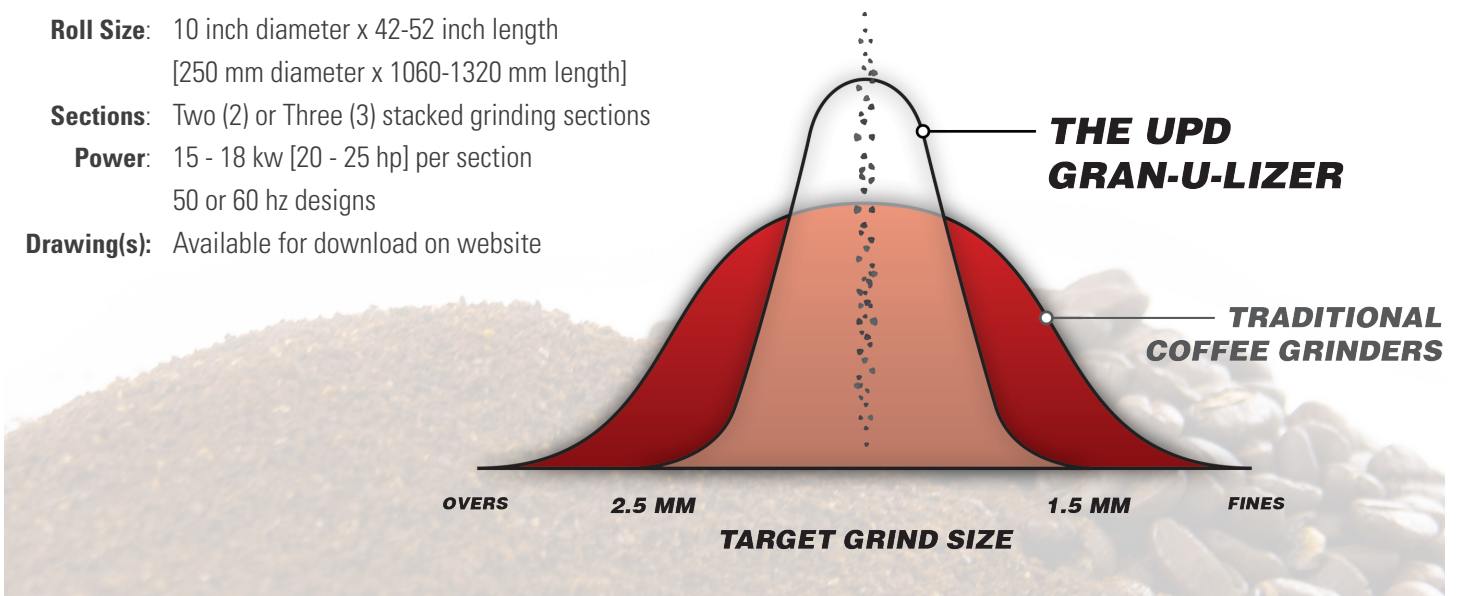
MPE understands coffee extraction! In depth research and experience has led to the development of a new grinding technology we call UPD (Ultra Uniform Particle Distribution). This UPD technology specifically benefits Soluble Coffee producers and allows for a number of benefits.

### **MPE'S UPD TECHNOLOGY BENEFITS:**

- **Ultra Uniform Particle Distribution** in the range of 1.0 - 3.0 mm average size.
- **Reduce Coffee Fines** (dust) up to 50% compared to traditional coffee grinders.
- **Gas Tight Designs** for aroma and gas reclaim.

### **SPECIFICATIONS**

- Roll Size:** 10 inch diameter x 42-52 inch length  
[250 mm diameter x 1060-1320 mm length]
- Sections:** Two (2) or Three (3) stacked grinding sections
- Power:** 15 - 18 kw [20 - 25 hp] per section  
50 or 60 hz designs
- Drawing(s):** Available for download on website



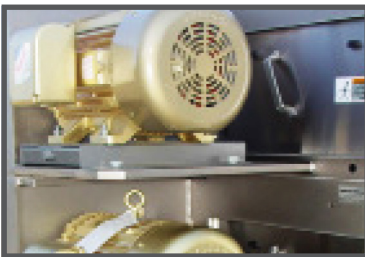
**MODERN PROCESS EQUIPMENT CORPORATION • MPECOFFEE.COM**

3125 SOUTH KOLIN AVENUE CHICAGO, ILLINOIS 60623, USA • SOLUTION@MPECHICAGO.COM • P: +1 773.254.3929 • F: +1 773.254.3935

1000 UPD

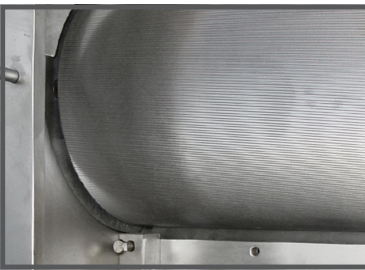
Model	Roll Size (mm)	Sections	Normalizer	Approximate Capacity (MT/hr)							Traditional Grind Range [average size in mm]
				1.0	2.0	3.0	4.0	5.0	6.0	7.0	
IMD 1042	250 x 1060	2 - 3	No				■				Soluble 1.5 - 3.0 mm
IMD 1052	250 x 1320	2 - 3	No				■	■			

## FEATURES



### GREATER CAPACITY & EFFICIENCIES WITH MODULAR GRINDING SECTIONS

Each modular grinding section is driven by its own high-efficiency **Independent Motor Drive (IMD)**, which allows for faster roll speeds and higher throughput than single drive motor designs. Relative roll speeds range from 1:1 (low-shear) to 3:1 (high-shear) ratios and roll speeds up to 2,500 rpm are possible.

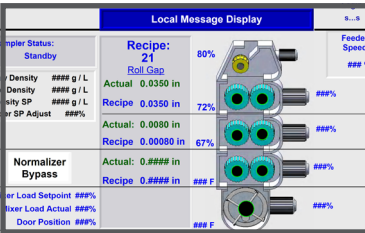


### RUGGED DESIGN & CONSTRUCTION

Heavy-duty construction and oversized double spherical roller bearings provide a long service life, reduced vibrations and maintain tight tolerances under extreme conditions.

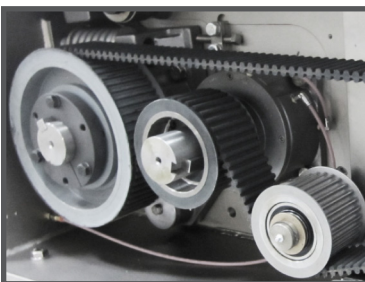
### UPD - ULTRA PARTICLE DISTRIBUTION TECHNOLOGY

Roll profiles and grinder configurations specifically designed for soluble coffee extraction. UPD Technology increases particle uniformity and reduces fines (dust) for improved extraction and efficiencies.



### AUTOMATED RECIPE-DRIVEN CONTROL SYSTEM WITH PRECISION SERVO GAP CONTROL

Unique pneumatic servomotor design and precision gap measurement on each grinding section provide easy, microfine gap adjustments with accuracy of +/- 10 microns. The Recipe-Driven Control System monitors and controls all grind and density requirements.



### HIGH TORQUE DRIVE (HTD)

The HTD drive system provides quiet, lubrication free operation with a wide range of speed and differential capabilities.

### ADDITIONAL OPTIONS

- Stainless steel or electroless-nickel construction
- Semi-automatic or PLC control systems
- Integrated magnet
- Gas-tight Construction



**MODERN PROCESS EQUIPMENT CORPORATION • MPECOFFEE.COM**

3125 SOUTH KOLIN AVENUE CHICAGO, ILLINOIS 60623, USA • SOLUTION@MPECHICAGO.COM • P: +1 773.254.3929 • F: +1 773.254.3935