

MODEL G7 SERIES TURKISH COFFEE GRANULIZER

SUPERIOR ULTRAFINE GRINDING provides Superior Taste, Aroma, Volatiles and Flavor Results



Model G7 Turkish Granulizer

Superior Ultrafine Grind - MPE's unique Granulizer produces a consistent Ultrafine grind from **40 to 150 microns** at 75 to 150 kg/hr (depending on fineness of grind).

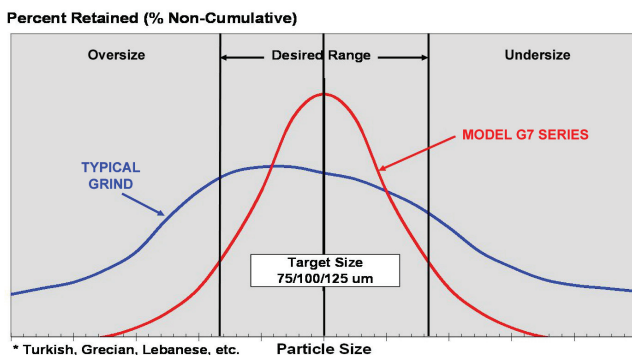
Ultra-cool Ground Coffee - Utilizing water-cooling for the initial, disc grinder section, and the final roller grinding section, the G7 keeps product temperatures below 40° C at all times and **volatile coffee oils and aromas are preserved** within the coffee.

Continuous long-term operation - Water-cooling makes it possible to **produce Ultrafine coffee 24 hours a day**, consistently and accurately.

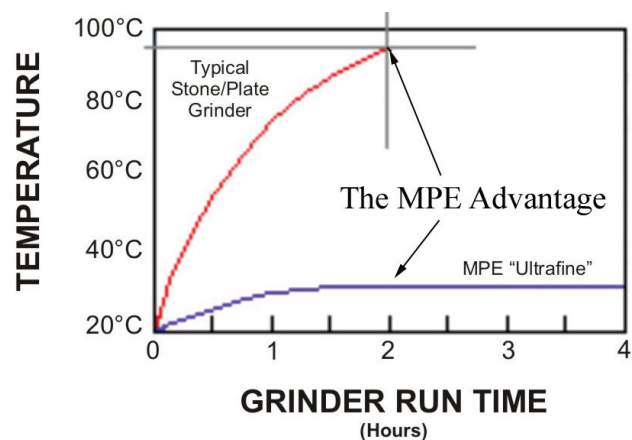
Affordability - By merging the quality benefits of the roller technology with the monetary benefits of the disc technology, the G7 is a valued equipment choice.

GRANULIZER VS. STONE GRINDER COMPARISONS

GRIND SIZE



TEMPERATURE



MODERN PROCESS EQUIPMENT CORPORATION

THE WORLD'S LEADING MANUFACTURER OF COFFEE GRINDING EQUIPMENT

Model	Grinding Sections	Normalizer	Approximate Capacity (kg/hr)					
			0	50	100	150	200	250
G7	1	Y						

Traditional Grind Range
[average size in microns]

Ultrafine	50 - 125 microns
Fine	125 - 175 microns

SPECIFICATIONS

Roll Size: 8" diameter x 8" long [203 x 203 mm]

Power: Disc Section: 2.2 kw [3 hp]

Roller Section: 7.4 kw [10 hp]

Capacities: Fine Grind (125-175 um): Up to 200 kg/hr.
Ultrafine Grind (50-125 um): Up to 100 kg/hr.

Drawing(s): Available for download on website

FEATURES:



Water-Cooled Disc Grinder for Ground Coffee Pre-Grinding

A water-cooled disc grinder performs the initial coffee grinding before it enters the final Ultrafine Granulizer section. The disc grinder adjusts to various grind settings and automatically sequences to deliver coffee to the final section.

Water-Cooled Ultrafine Granulizer Section

The G7 utilizes the same precision roller-style grinding technology as MPE's larger Ultrafine Granulizers to achieve the same high-quality Ultrafine grind. Heat elimination in the grinding process **preserves the coffee volatile oils and aroma** and prevents a "second roast" during grinding.

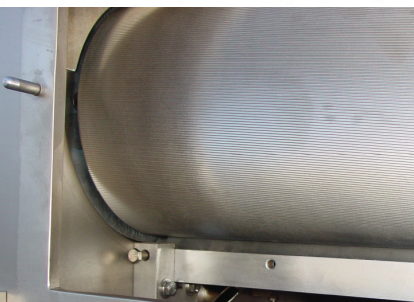


Rugged Design and Construction

The G7 disc-grinder is constructed from MPE's most popular water-cooled GPX series. The Ultrafine grinding section features heavy-duty construction and oversized double spherical roller bearings provide a long service life, reduced vibrations and maintain tight tolerances under extreme conditions.

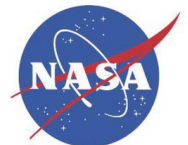
High Torque Drive (HTD)

The HTD drive system provides quiet, lubrication-free operation with a wide range of speed and differential capabilities.



Advanced Roll Materials

Advanced roll materials developed by **NASA** provide up to 5 times standard roll life and **near diamond surface hardness** for exceptional wear-resistance and long-term grind performance. This unique MPE feature makes possible the modern, roller-style, Ultrafine Granulizer.



Vibratory Feeder

Ensures even product flow from disc to roller grinder section

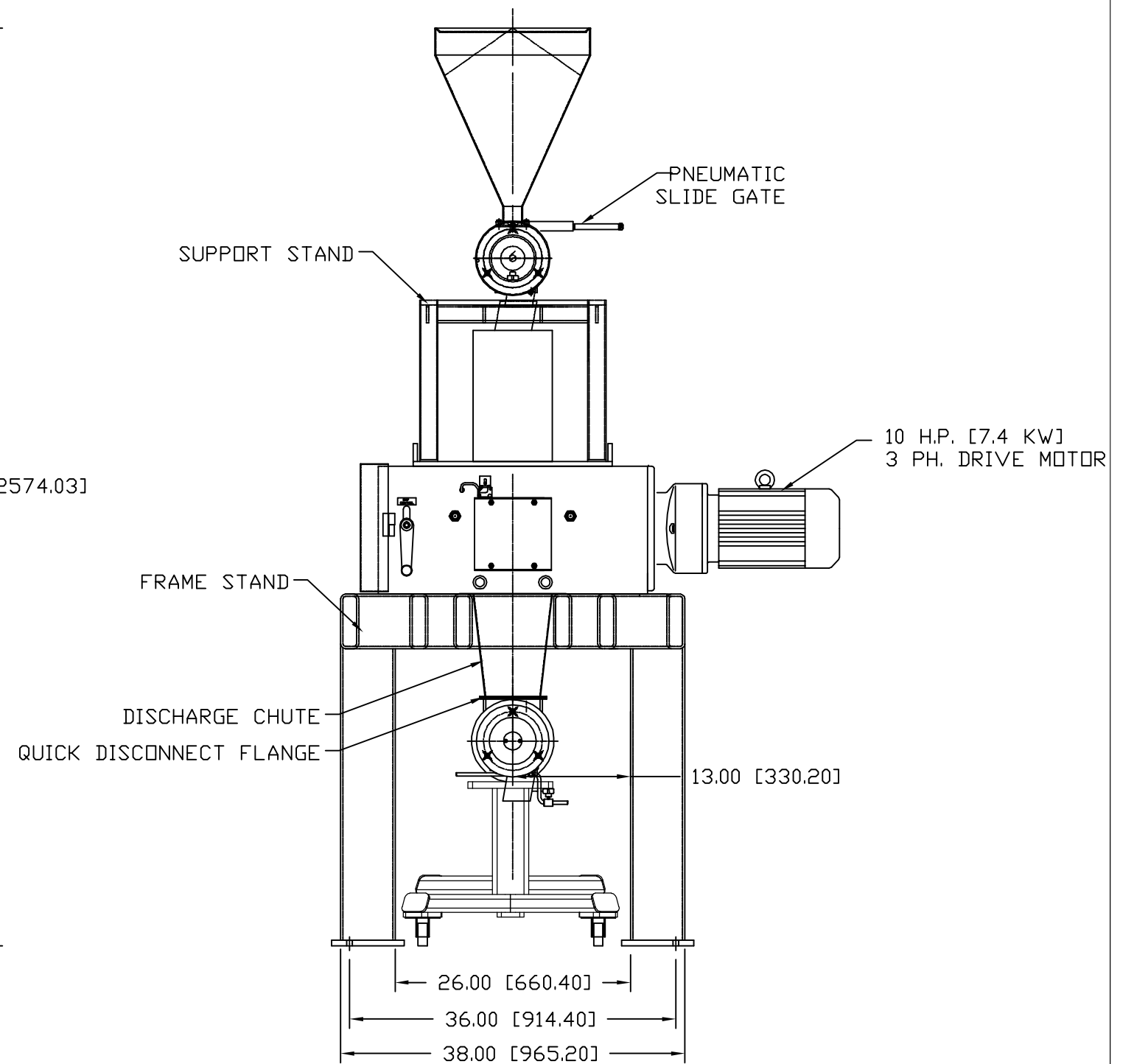
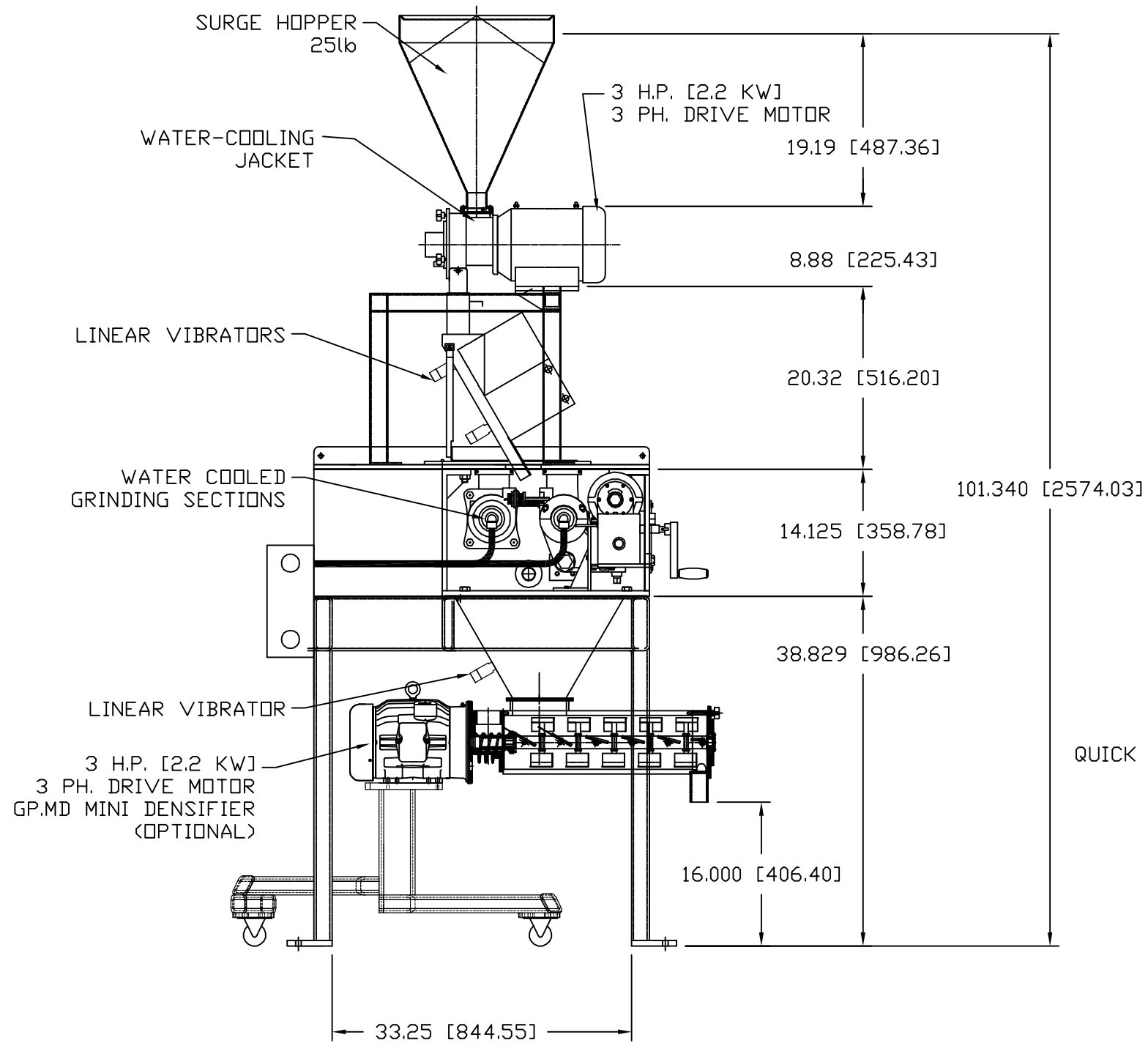
MODERN PROCESS EQUIPMENT CORPORATION

mpechicago.com
solution@mpechicago.com

3125 South Kolin Avenue
Chicago, Illinois 60623
U.S.A.

P +1 773 254 3929
F +1 773 254 3935





REV.	CHANGE	DATE	BY	MATERIAL	USED ON UNIT	MPE	 MODERN PROCESS EQUIPMENT, Inc. 2125 South 14th Avenue, Chicago, Illinois 60628	DRAWN RR DATE 9/2/10 CHECKED	SCALE NTS
							NAME OF PART MODEL G7 ULTRAFINE GRANULIZER WITH GP. MD MINI DENSIFIER	PART NO. 69-8480	D